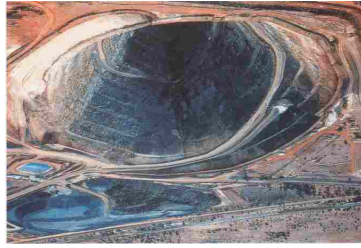


WHAT'S YOUR PROBLEM ?



UNDERGROUND HAULING?



HIGH RAMPING ?



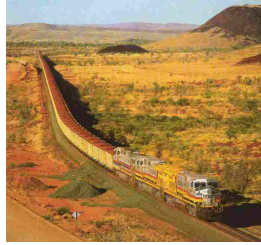
DUST LOSSES?



PROCESS CONVEYING ?



PASTE TRANSFER ?



LAND TRANSPORT ?



EXPORTING ?

CHECKOUT THE BOSMIN® CoAXIAL PIPE (CAP) OPTION



Email contact: BobBeatty@bosmin.com

<http://www.bosmin.com/CAP/cap1.MOV>

CAP Technical Bulletin at <http://www.bosmin.com/CAP/cap1.pdf>

- ★ CAP CAN NEGOTIATE TIGHT CURVES AND STEEP SLOPES
- ★ CAN BE EXTENDED INDEFINITELY
- ★ CAN HANDLE VOLUMES FROM 10 TO 7,000+ M³ PER HOUR
- ★ SUITABLE FOR PASTE TRANSPORT
- ★ REGENERATES POWER ON DOWN SLOPES
- ★ USES COMMONLY AVAILABLE COMPONENTS
- ★ SUSPEND CAP BY WIRE, WHEEL MOUNT, PONTOON, OR GROUNDED
- ★ ELIMINATES PRODUCT LOSSES AND CONTAMINATION
- ★ IS NOT IMPACTED BY HIGH WIND VELOCITY
- ★ LOW NOISE IMPACT